

# EMFAD<sup>®</sup> - UG12 PRO



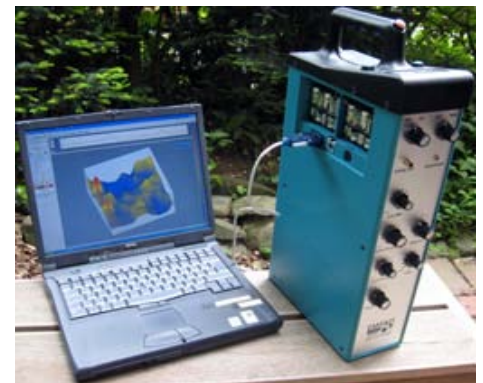
The **EMFAD-measuring method** is based on the evaluation of variations of electromagnetic field data caused by anomalies in the subsoil. It can locate

- **conductive materials, such as metal, pipes, barrels, cables, reinforced concrete, electrolytic effluents, etc.**
- **irregularities like cavities, graves, faults, shafts, ground fills, deposits, caves, tunnels, landfills.**

The EMFAD-Technology has been successfully deployed in practice under various different climatic and geological conditions by professionals as well as by hobby researchers. Fields of application predominantly are archeology, geophysics, geology, hydrology and treasure locating (treasure hunting) in very different application areas as archeological sites, industrial waste sites and waste deposits, building lots, mining areas, street- construction sites, military practice sites and other soil investigations.

## Technical Information:

- **I- Electromagnetic sensor system:** Works world wide in passiv mode with external Radio Stations and in active mode with own Transmitter
- **Receiver frequency range:** External Frequencies: 130 kHz, 77.5 kHz, 23.4 kHz – Own Transmitter: 33 kHz
- **Microprocessor controlled measurement:**
  - **Automatic mode:** Probe recording and readings are stored automatically 1/sec.
  - **Manual mode:** Manual triggering, readings stored automatically.
- **Datalogger:** Capacity 32.000 readings per area nvestigated.
- **Data point density:** Dependent on step-length and –distance between measured profiles >= 10 cm.
- **Depth of localization:** Up to 12 m.
- **Resolution:** 10 Bit / 8V.
- **Dimension/Weight:** 51 x 28 x 12 cm, 5 kg.
- **Power supply:** 2 x 12V Battery-Packs (ALKALINE), for an operating time of approximately 12 hours.
- **Ambient teperature:** -10 to +55 C.
- **Data processing:** With software EMFAD-Scan for 2D and 3D. presentations, interpretation, modeling, documentation and printing.
- **Data export:** For further processing and documentation to Microsoft-EXCEL, SURFER from Golden Software or any other program, which is able to handle ASCII-files.
- **Shipment:** Electronic Unit with EMFAD-ScanPRO Software, Charger, Data cable, Carrying Case, Manual: english & german.

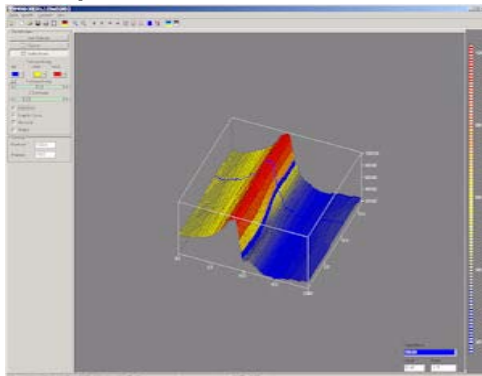


**Data output/exchange** from EMFAD-UG12 PRO to a Notebook(or PC)via RS-232 or USB port interface for data processing with the evaluation- and presentation software

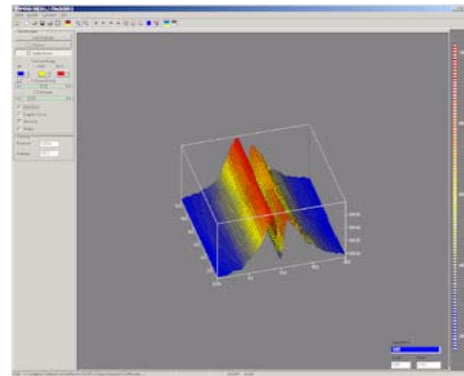
**Article.-No. 99543 - €9.800,00 EURO incl. 19% VAT.**

- **Optional:** Exteral Tansmitter (33 kHz) with cable, Charger: **Article.-No. 99544 - €1.600,00 EURO incl. 19% VAT.**

## **Examples of Measurement:**



**Detection of a pipe with 23,4 kHz**



**Detection of a pipe with 77,5 kHz**

Designe and specifications subject to change without notice!.